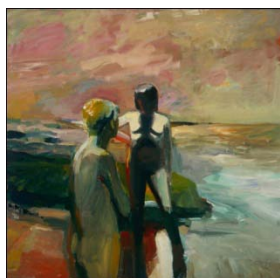


California Landscape into Abstraction: Works from the Orange County Museum of Art

December 15, 2013, through March 9, 2014



Elmer Bischoff, *Two Figures at the Seashore*, 1957



John Altoon, *Ocean Park Series* 1962



Pearl C. Hsiung, *Tidal Wretch*, 2005



Walead Beshty, *Island Flora*, 2005

Exhibition Overview

Drawn exclusively from the collection of the Orange County Museum of Art, Chief Curator Dan Cameron tackles the complex history of landscape representation in Southern California. In the exhibition catalog, Cameron places these developments in the context of the region's growth from Western outback to the bustling, populated, powerhouse it is today.

One of the recurring themes in California art over the past century is the relationship between abstraction and landscape. This exhibition, through thematic groupings of works from different periods, explores ways in which artists from the West Coast have played a role in transforming landscape into abstraction and, in some cases, back again.

The exhibition includes several fine examples of 19th and early 20th century landscape paintings which pave the way to the heart of the exhibition; dozens of outstanding mid-century paintings in which an effort was made to incorporate elements of landscape without falling into art historical stereotypes. *California Landscape into Abstraction* also takes visitors into the avant-garde works from the 1960s and 1970s by such artists as John Altoon, Lynn Foulkes, and Ed Ruscha, and from there through recent developments in landscape interpretations, with sensibilities ranging from naturalist to conceptual, along with hybrid variations in between.

The Artworks

With a couple of exceptions, the artworks in the exhibition were created between 1920 and 2011. There are more than 120 works presented including painting, photography, works on paper, prints, video, and one sculpture.

The exhibition showcases favorites from OCMA's collection including Richard Diebenkorn's *Ocean Park #36* (1970), John Altoon's *Ocean Park Series* (1962), Elmer Bischoff's *Two Figures at the Seashore* (1957) and Maynard Dixon's *The Loner* (1930)—although presented as never before, giving new relevance to these well-known artworks. Visitors will also enjoy works that have rarely been viewed, including Tim Hawkinson's *Concentric Circle: 705 Year-Old Tree*

Drawing (1989), Dorothea Lange's *A Very Blue Eagle: Tranquility Vicinity, Fresno County*, (1936), and James Luna's *End of the Frail* (1993).

A brand-new gift to OCMA, Penelope Umbrico's *Sunset Portraits from 9,673,302 Sunset Pictures on Flickr 8/31/11* (2011), will debut in this exhibition on the Pavilion wall with its more than 3,000 individual 4 x 6" sunset photos.

The Artists

California Landscape into Abstraction installs works by nearly one hundred artists including Ansel Adams, Peter Alexander, John Altoon, Elmer Bischoff, Vija Celmins, Frank Cuprien, Jay DeFeo, Richard Diebenkorn, Judy Fiskin, Llyn Foulkes, Dorothea Lange, Helen Lundeborg, Lee Mullican, Agnes Pelton, Ken Price, Ed Ruscha, Millard Sheets, James Turrell, Elmer Wachtel, Mary Weatherford, William Wendt, Edward Weston, among others

Kim Abeles	Maynard Dixon	Richard Misrach
Ansel Adams	Elliott Erwitt	Lee Mullican
Lita Albuquerque	Brian Fahlstrom	Joan Myers
Peter Alexander	Judy Fiskin	Charles Christian Nahl
Carlos Almaraz	Llyn Foulkes	Kori Newkirk
John Altoon	Lee Friedlander	Agnes Pelton
Lewis Baltz	Mary Finley Fry	John Pfahl
Mark Bennett	William Giles	Ken Price
Walead Beshty	Ed Gilliam	Ed Ruscha
Edward Biberman	Joe Goode	Terry Schoonhoven
Elmer Bischoff	April Gornik	Millard Sheets
Paul Brach	Jane Gottlieb	Shirley Shor
George Kennedy	Katy Grannan	Stephen Shore
Brandriff	Tim Hawkinson	Alan Sonfist
Rex Brandt	Drew Heitzler	Norman St. Clair
Nicholas P. Brigante	Maxwell Hendler	Arthur Taussig
Laurie Brown	Anthony Hernandez	Diana Thater
Conrad Buff	Eikoh Hosoe	Hank Willis Thomas &
Jerry Burchfield & Mark	Pearl C. Hsiung	Kambui Olujimi
Chamberlain	N. Jay Jaffee	Mungo Thomson
Brian Calvin	Robert Glenn Ketchum	George Tice
Vija Celmins	Paul Kos	James Turrell
William Clift	Roger Kuntz	Penelope Umbrico
Larry Cohen	Ben Kutcher	Elmer Wachtel
Miles Coolidge	Paul Landacre	Mary Weatherford
Carlotta Corpron	Dorothea Lange	William Wendt
Frank Cuprien	John Lees	Edward Weston
Jay DeFeo	James Luna	Frederick Wight
Lewis deSoto	Helen Lundeborg	Jane Wilson
Richard Diebenkorn	Daniel Joseph Martinez	Paul Wonner
John Divola	Barse Miller	Amir Zaki
James Milford Zornes		